

DURFEE CREEK ESTATES NO. 1

LOTS 4-17, 27, 28, COMMON AREA 'B'

IN WEBER COUNTY

TAXING UNIT: 92

PREFIX: 17-137

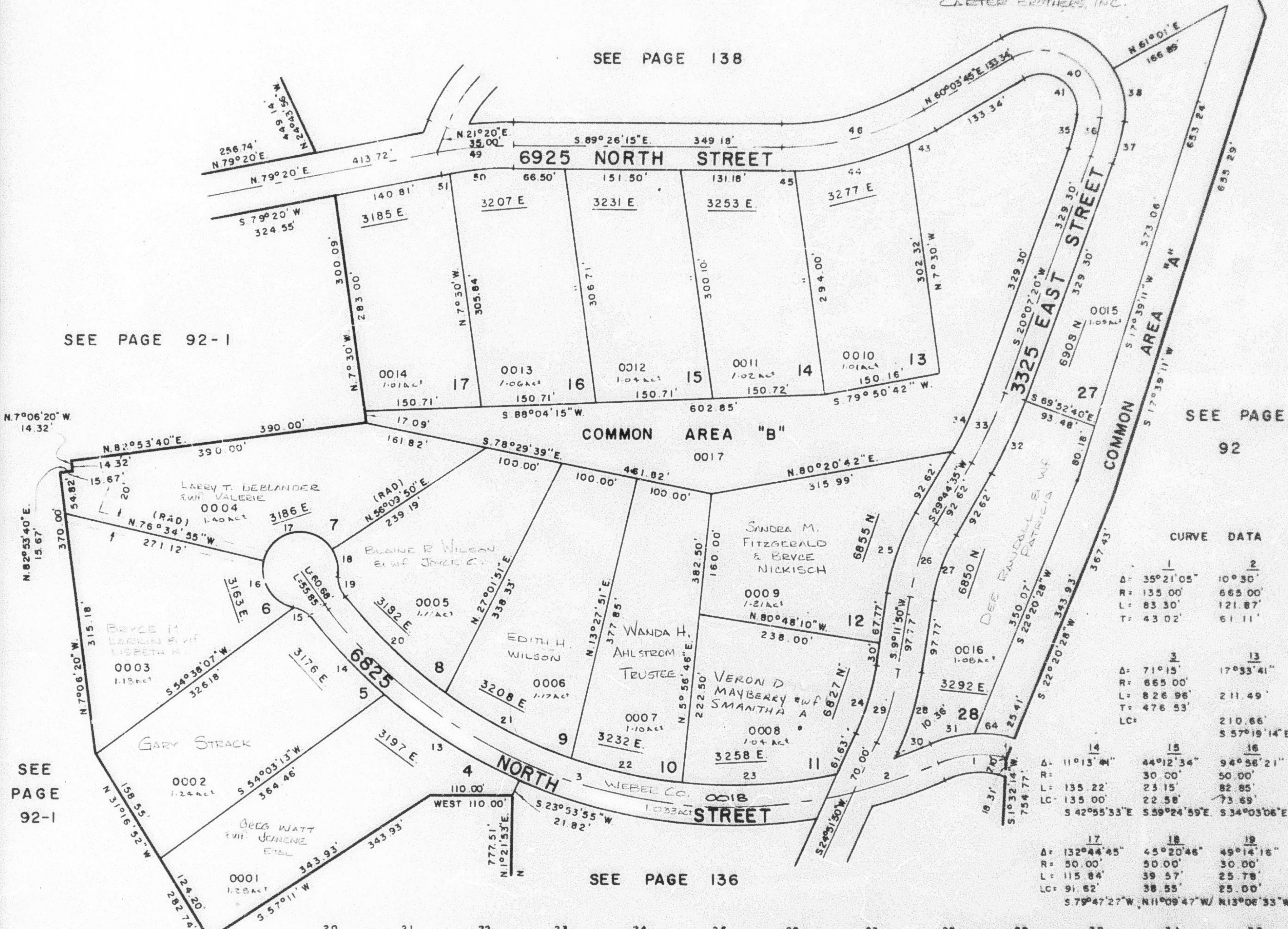
SCALE 1" = 100'

EXCEPT WHERE OTHERWISE SHOWN
ALL LOTS OWNED BY
CARTER BROTHERS, INC.

SEE PAGE 138

SEE PAGE 92-1

SEE PAGE 92



CURVE DATA

	1	2
Δ:	35°21'05"	10°30'
R:	135.00'	665.00'
L:	83.30'	121.87'
T:	43.02'	61.11'
	3	13
Δ:	71°15'	17°33'41"
R:	665.00'	211.49'
L:	826.96'	210.66'
T:	476.53'	557°19'14"E
LC:		
	14	15
Δ:	11°13'41"	44°12'34"
R:	135.22'	30.00'
L:	135.00'	23.15'
LC:		22.58'
	S 42°55'33"E	S 59°24'59"E
		S 34°03'06"E
	17	18
Δ:	132°44'45"	45°20'46"
R:	50.00'	50.00'
L:	115.84'	39.57'
LC:	91.62'	38.55'
	S 79°47'27"W	N 11°09'47"W
		N 13°06'33"E
	19	20
Δ:	49°14'16"	15°40'
R:	30.00'	363.44'
L:	50.00'	99.38'
LC:	25.00'	50.00'
	21	22
Δ:	50°33'30"	18°06'15"
R:	56.53'	50.56'
L:	50.56'	104.80'
LC:		
	23	24
Δ:	56.51'	50.35'
R:	568°46'50"W	574°46'06"W
L:		N 24°55'58"E
LC:		

FOR COMPLETE ENG. DATA
SEE ORIG. DED. PLAT IN
BOOK 23, PAGES 28, 29, 30

	20	21	22	23	24	25	26	27	28	29	30	31	32
Δ:	16°14'45"	16°37'13"	13°27'35"	18°03'53"			20°37'45"			15°40'	5°03'30"	18°06'15"	
R:							275.87'			363.44'			
L:	181.47'	185.65'	150.35'	201.79'	91.17'	109.68'	98.93'	88.17'	107.58'	99.38'	56.53'	50.56'	104.80'
T:							50.00'			50.00'			
LC:	180.86'	185.00'	150.00'	200.95'	90.89'	109.10'		87.70'	107.24'		56.51'	50.35'	104.80'
	N 45°51'03"W	N 62°17'03"W	N 7°19'26"W	S 86°54'50"W	S 17°01'50"W	S 19°28'13"W		N 19°26'13"E	N 17°01'50"E		S 68°46'50"W	S 74°46'06"W	N 24°55'58"E
	33	34	35	36	37	38	39	40	41	42	43	44	45
Δ:	9°37'15"			11°18'50"	37°47'30"	128°44'45"			5°40'16"	21°54'16"	2°55'27"	30°30'	11°13'45"
R:	594.14'			262.18'	57.70'	76.75'						366.80'	508.61'
L:	99.77'	94.73'	45.85'	51.77'	70.41'	172.47'	105.05'	39.28'	151.70'	20.25'	195.26'	99.68'	84.38'
T:	50.00'			25.97'		180.00'					100.00'	50.00'	50.00'
LC:		94.62'	45.77'		57.60'	69.14'			84.31'	39.26'	150.78'	20.25'	84.27'
		S 24°55'58"W	S 14°27'55"W		N 14°27'55"E	N 10°05'15"W			S 58°33'53"W	N 62°53'53"E	N 76°41'10"E	N 89°06'1"E	